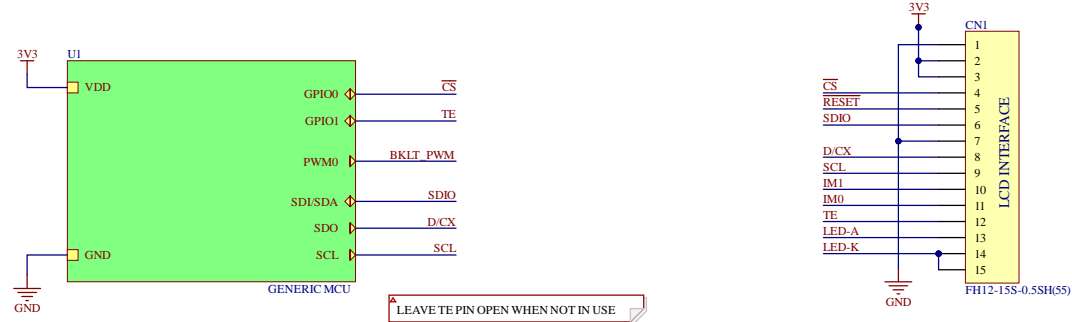
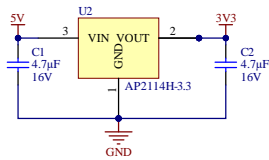


REVISION HISTORY			
REV	DESCRIPTION	APPR	DATE
A1	INITIAL RELEASE	PRW	2020.1005
A2	UPDATED BACKLIGHT DRIVER CIRCUIT, CORRECTED DISPLAY PART NUMBER	PRW	2023.11.17

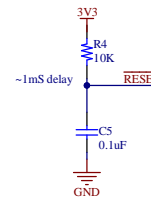
## REFERENCE DESIGN DT028DTFT-IPS & DT028DTFT-IPS-SHB (SERIAL CONFIGURATION AND IMAGE DATA)



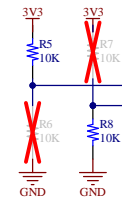
### DISPLAY LOGIC POWER



### RESET TIMING



### SERIAL INTERFACE SELECTION

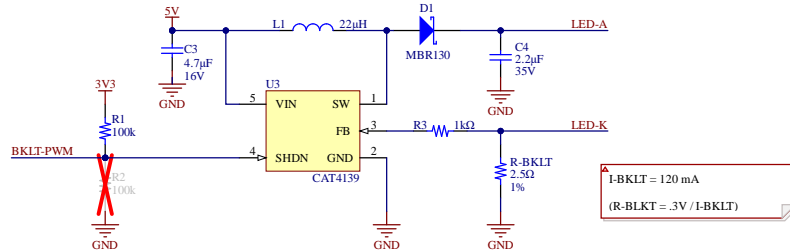


4-WIRE 8-BIT SERIAL COMMUNICATION INTERFACE  
\*SEE SERIAL INTERFACE TABLE FOR CONFIGURATION OPTIONS

SERIAL INTERFACE SELECTION							
MODE	IM1	IM0	R5	R6	R7	R8	
3-WIRE 9-BIT	0	1	-	X	X	-	
4-WIRE 8-BIT	1	0	X	-	-	X	

\*X = POPULATE

### LED BACKLIGHT DRIVER



BACKLIGHT OPTIONS:  
\*\*FOR DARK SCREEN (BACKLIGHT OFF) AT BOOT TIME: POPULATE R2, DEPOPULATE R1.  
\*\*FOR NORMAL SCREEN (BACKLIGHT ON) AT BOOT TIME: POPULATE R1, DEPOPULATE R2.

Project: DT028DTFT-IPS			<b>Displaytech</b> a seacomp company	
Title: DT028DTFT-IPS Reference Design				
Size: A3	DocNumber: 1	Revision: A2	Drawn By: PRW	
Date: 11/17/2023	Time: 9:02:55 PM	Sheet: 1 of 1	Approved:	
File: DT028DTFT-IPS_RefDesign_A2.SchDoc			Date:	
			SEACOMP Displaytech 2546 Gateway Road Carlsbad, CA 92009 USA	